

ITALY

SINCE 1967



PRODUCT RANGE

VIMEC VALVES

HISTORY



VIMEC Srl, established in 1967 as an individual craft company to produce different mechanical components (machining on behalf of third party companies).

In 1985, with its ideology of continuous improvement, VIMEC upgraded the technological content of its products.

The company started manufacturing of components related to instrumentation area such as Manifolds, Double Block and Bleed Valves, Mono Flanges, Ball Valves, Needle Valves, Multiport, Check Valves, Globe Valves, Condensing Pots, Distribution Manifolds, Air Headers Distributors, Sampling Cylinders and accessories.

VIMEC products are trusted and used in various applications in any field of engineering (chemical, petrochemical and power plants)

In 1994 the company Srl (Ltd) was established and took over the individual craft company.



INTEGRAL



VIMEC offers a wide variety of DBB valves to meet different kind of applications:-

Integral DBB Valve are used in the instrumentation systems.

Flange to Flange, Flange to Thread, Injection and Sampling with Ball and Needle Configurations.

VIMEC Integral Double Block & Bleed Valves are equipped with a drain needle valve mounted between the two balls.

This permits to drain the valve and reset the pressure to zero.

Size Range: ½" to 3"

Pressure Class : 150 Lbs to 2500 Lbs, API 3000 to API 10,000

Internal Bore Diameter: 10 and 15 mm

Design Standards: Valves are manufactured in full compliance with product specifications and conforms to API 6D, ANSI, ASME, British Standards etc



MODULAR



The main characteristics of this design is double isolation with two independent balls in one valve body, guaranteeing positive shut off with maximum safety.

VIMEC can offer valves with Raised Faced, Ring Type Joint, Hub connections and Butt Welded Ends with Lever or Gear Operators

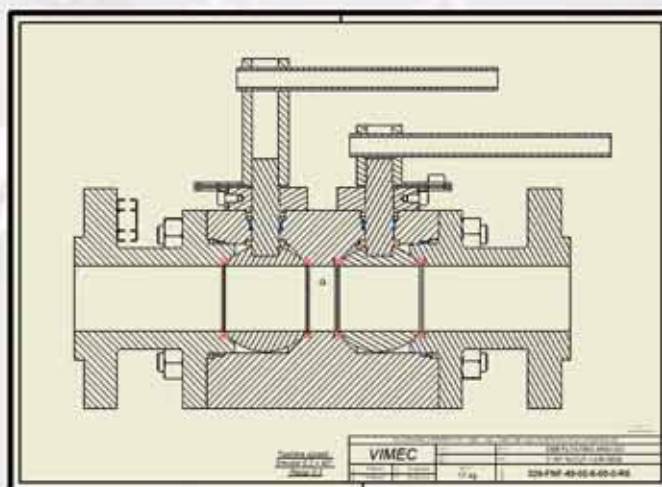
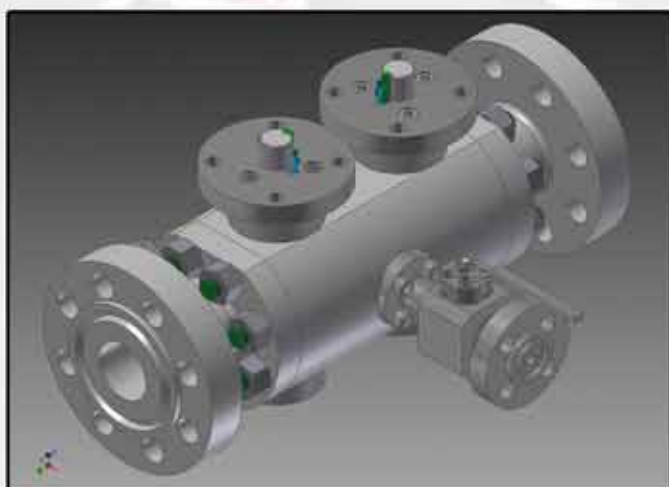
VIMEC Double Block & Bleed Valves are equipped with a drain needle/ball valve mounted between the two balls.

This permits to drain the valve and reset the pressure to zero.

Size Range:- ½" to 3" for Instrumentation , 1" to 24" for Pipeline Valves

Pressure Class : 150 Lbs to 2500 Lbs, API 3000 to API 10,000

Design Standards: Valves are manufactured in full compliance with product specifications and conforms to API 6D, ANSI, ASME, British Standards etc



COMPACT VALVES



VIMEC Compact Design Valves utilize a face to face dimension of a single ball valve in accordance with API 6D

VIMEC has developed compact design with continuous research to improve and meet customer's requirements and expectations as a completion of its Double Block & Bleed Valves range.

The design has been developed with integral flange connections into valve body in order to achieve short face-to-face dimension as a single block ball valve with light weight, which means the valve can easily be installed into an existing pipeline without the need for any pipeline re-working.

Size Range: 2" to 36"

Pressure Class : 150 Lbs to 2500 Lbs

Design Standards: Valves are manufactured in full compliance with product specifications and conforms to API 6D, ANSI, ASME, British Standards etc



NEEDLES



VIMEC Needle Valves are made from bar-stock.

VIMEC can also offer Needle Valves with twin ferrule compression ends. This combination is an alternative to threaded connections to eliminate the use of thread sealant, consequently reduction of leak is guaranteed.

Size Range: 1/4" to 1-1/2"

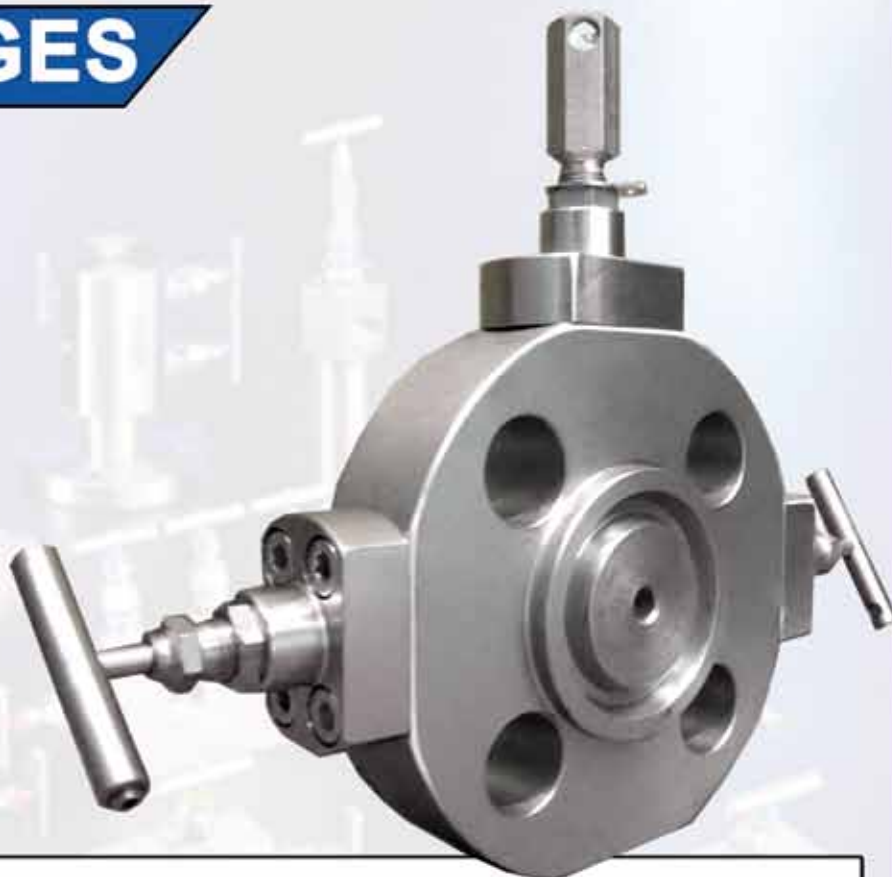
Pressure Class : 6000, 10000, 15000 psi

End Connections: Threaded NPT, BSPT, BSPP, SW, BW

Design Standards: Valves are manufactured in full compliance with product specifications and conforms to API 6D, ANSI, ASME, British Standards etc



MONOFLANGES



VIMEC Monoflanges are used in upstream offshore/onshore gas and oil production and initial processing installation.

Vimec Monoflanges are available in 4mm, 10mm bore diameter typically used in gas gauge pressure instrument applications to minimize the size and the weight of the pipeline valve assemblies used for primary and / or secondary isolation, vent and calibration.

It is also used in downstream oil and gas refining and petrochemical production.



MANIFOLDS



VIMEC offers a wide range manual valves designed for various applications suitable for instruments and line cut-off on steam and high pressure fluids.

These valves are suitable for standard and critical applications where high resistance to pressure temperature and corrosion are of primary importance and when tight shut-off time performance and long lasting equipment are required.

All our manifold are made from bar-stock and available with $\frac{1}{4}$ " and $\frac{1}{2}$ " size connections with pressure rating of 6000, 10000 and 15000 psi.

Standard connections are Threaded NPT, BSPT or BSPP and they are also available with SW and BW ends



MISCELLANEOUS



MISCELLANEOUS

MISCELLANEOUS



VIMEC
SINCE 1967
VALVES

TOP ENTRY



VIMEC ensures in-line field service and maintenance by removing the valve top cover and allow free access to the cavity of the body.

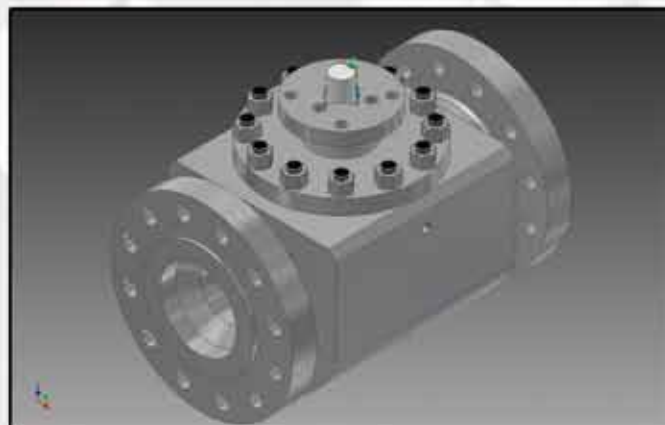
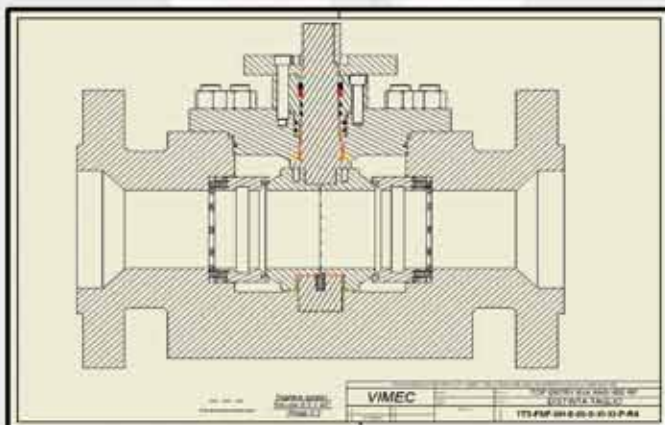
A series of special maintenance tools allows you to remove the ball and seats. This maintenance requires a very little space around the valve and therefore suitable for areas with space constrain. The special design allows the replacement of the shaft seal when the valve is in the closed position. The seal is guaranteed by O-rings or Lip Seals and seals in graphite fire retardant that can be replaced when the valve is under pressure.

Size Range: 1" to 36"

Bore : Full & Reduced

Pressure Class : 150 Lbs to 2500 Lbs

Design Standards: Valves are manufactured in full compliance with product specifications and conforms to API 6D, ANSI, ASME, British Standards etc



FLOATING & TRUNNION



VIMEC offers a wide range of soft & metal seated Ball Valves in 2 pc, 3 pc body construction (Floating & Trunnion design).

VIMEC Ball Valves provide positive shut-off minimizing the pressure drop.

Trunnion-mounted, double block-and-bleed valves conform to API 6D standard.

Other design features : Anti-Blow out stem, Automatic Cavity Relief Mechanism, Fire Safe etc

Floating & Trunnion (1 Piece / 2 Piece / 3 Piece Design)

Size : ½" to 36"

Rating : ANSI 150#, 300#, 600#, 800#, 900#, 1500#, 2500#

Ends : Screwed, Socket Weld, Flanged RF, RTJ, BW

Bore : Full & Reduced

Carbon Steel, Stainless Steel, Low Temp, Alloy & Duplex Steel. Soft Seated & Metal Seated

Fire Safe, NACE MR-01-75

Design Standards: Valves are manufactured in full compliance with product specifications and conforms to API 6D, ANSI, ASME, British Standards etc



GATE, GLOBE & CHECK



VIMEC offers a wide variety of Gate, Globe & Check Valves in bolted-bonnet, welded-bonnet & pressure-sealed bonnet design.

Size : 2" to 48"

Rating : ANSI 150#, 300#, 600#, 900#, 1500#, 2500#

Ends : Flanged RF, RTJ, BW

Carbon Steel, Stainless Steel, Low Temp, Alloy & Duplex Steel

NACE MR-01-75

Gate & Globe Valves:

- OS & Y Rising Stem
- Bolted Bonnet & Pressure Seal Bonnet
- Non Rising Stem
- Bellow Sealed Globe Valves
- Fugitive Emissions
- Extended Stem configuration & Angle type bodies

Check Valves:

- Bolted Cover & Pressure Seal Type Cover
- Non-Slam Type
- Fugitive Emissions



GATE, GLOBE & CHECK



VIMEC offers a wide variety of Gate, Globe & Check Valves in bolted-bonnet & welded-bonnet design.

Size : 1/2" to 2"

Rating : ANSI 150#, 300#, 600#, 800#, 1500#, 2500#

Ends : Screwed, Socket Weld, Flanged RF, RTJ, BW

Carbon Steel, Stainless Steel, Low Temp, Alloy & Duplex Steel

NACE MR-01-75

Gate & Globe Valves:

- OS & Y Rising Stem
- Bolted Bonnet & Pressure Seal Bonnet
- Non Rising Stem
- Bellow Sealed Globe Valves
- Extension Nipples
- Fugitive Emissions
- Extended Stem configuration & Angle type bodies

Check Valves:

- Lift Type Design, Ball type Design
- Fugitive Emissions



BUTTERFLY VALVES



VIMEC Butterfly Valves are designed to meet various applications in the waterworks, chemical, petrochemical, upstream storage and power industries.

Resilient Seated, Double Eccentric, Triple Eccentric

Size : 2" to 72"

Rating : ANSI 150#, 300#, - PN10, PN16

Ends : Wafer Type, Lugged, Semi Lugged & Flanged

Carbon Steel, Stainless Steel, Ductile Iron & Cast Iron

Design Standards: Valves are manufactured in full compliance with product specifications and

conforms to API, ANSI, ASME, British Standards etc

- Different Elastomeric Seats to suit service condition for centric disc design type Butterfly Valves

- Different Polymer Seats to suit service condition. (For High performance Butterfly Valves)
- Electric & Pneumatic operated valves with Customized Automation as per requirement
- Large AWWA C504 Butterfly Valves for water lines



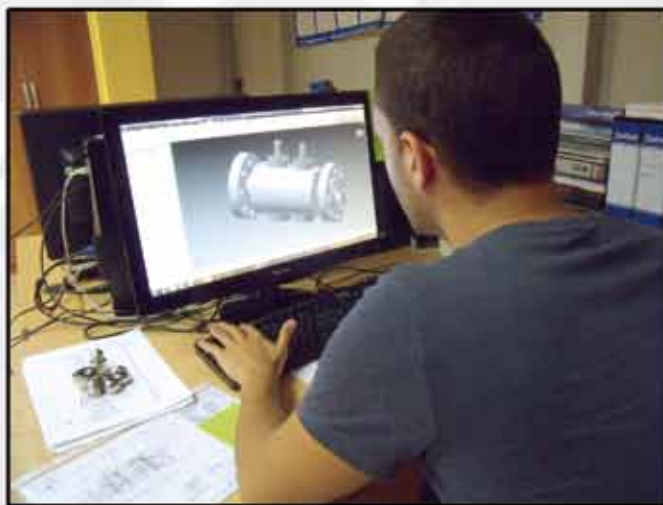
TECHNICAL DEPARTMENT

At **VIMEC** – our Research & Development team continuously strive to develop, improve and streamline our designs.

Our technical department prepares 2D, 3D drawings and analyze the request from our client's project specifications on a single, double & triple balls.

In order to meet client's requirements, our technical department offer the most suitable & appropriate product solutions as per the international standards such as ASME, API, Norsok to mention a few.

Our valves are manufactured in various design and materials such as: A105N, A350 LF2, LF6, A182 F316 (L), F51 Duplex, Super Duplex F44, F53, F55, F60 and Special materials like Nickel Al-Bronze, Hastelloy C276, Inconel 625 or 825, Monel K 400 and 500 and Titanium Class 2, or other materials as client's request.

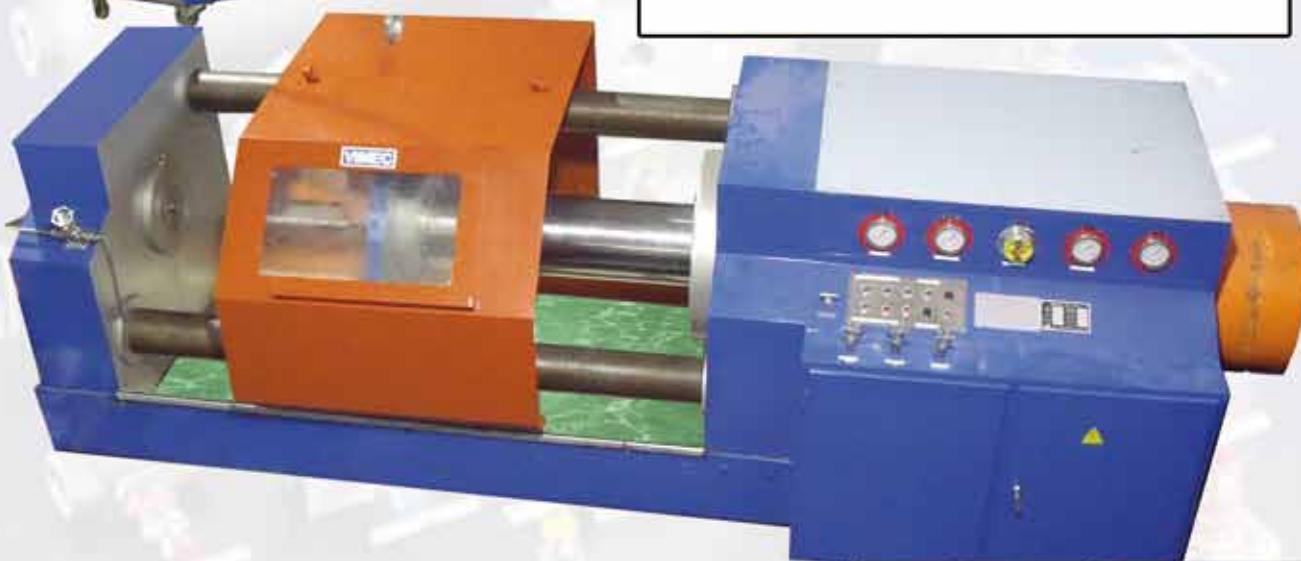


QUALITY DEPARTMENT



At **VIMEC** – our quality department is driven by our commitment to continuous quality improvement.

VIMEC performs tests such as such as dimensional control, P.M.I., coating thickness, gas test, high and low pressure test, fugitive emission, etc. thus ensuring the proper functionality of our products with 100% traceability and certifications.





PRODUCTION

At **VIMEC** – our laboratory uses the most advanced equipment, such as 12 lathes and 6 CNC machines, also has the support of five external workshops that work by our design and standards. The experience we gained over the years makes our products the most reliable and state of the art.

WORKSHOP

At **VIMEC** - our workshop is fully equipped with highly specialized assembly team who ensures that components are machined, tested and delivered with shorter delivery schedules.



VIMEC Srl



HQ - Via Lambro, 62 - 20090 OPERA (Milano) - ITALY

Tel.: +39 02 5760 2297 - Fax +39 02 5760 0409

e-mail: info@vimec-valves.com

website: www.vimec-valves.eu



Vimec Valves Distribution DMCC

Po Box 9403, Jumeirah Lakes Towers, Dubai, United Arab Emirates

Tel.: +971 4 430 3511 / Fax: +971 4 430 3512

e-mail: sales@vimec-valves.ae

website: www.vimec-valves.ae

